



# Daily Life Plaza



Entrance to  
Utoji-land

## 2025 (Reiwa 7) December



JKK東京

Issued By: Public Housing Management Division, Tokyo Metropolitan Housing Supply Corporation |  
Cosmos Aoyama, 5-53-67 Jingumae, Shibuya-ku, Tokyo 150-8322

## Reminder Postcards about Submitting 収入報告書 (Income Report)

### Reminder postcard (sample)

名義人番号 (一般)

「令和8年度収入報告書」を提出してください

令和7年 月 日現在、あなたの世帯から収入報告書の提出が確認できていません。  
収入報告書の提出は、法令で定められた都営住宅に住む方の義務です。

収入報告書の提出がない場合は、収入状況にかかわらず令和8年4月から近隣の民間  
賃貸住宅(近隣同様の住宅)の家賃並みの使用料を負担していただくことになります。  
また、収入報告書を提出しない世帯については、居住状況の調査を実施します。  
調査の結果、不適正な使用状況が判明した場合は明渡しを請求する場合があります。

料金後納  
郵便

0570-03-0071 (ナビダイヤル)  
03-6279-2652 (一般電話)  
も無料通話や通話料定額プランの対象外となります。

〒110-8322  
JKK東京 東京都住宅供給公社  
都営統括課 収入課係 電話 03(3409)2261内  
重要

※この用紙は、  
印刷してご利用ください。

The 収入報告書 (income report) form was sent out to those required to file one by Friday, June 13. However, some people still have not submitted the report.

We will send a reminder postcard on **Wednesday, December 10** to everyone who has not submitted the report. If you receive this postcard, be sure to submit your report.

If you fail to submit one, your housing fees from April 2026 will be equivalent to the rent for similar apartments in the neighborhood (private rental housing).

Note: If you are receiving a reduction/exemption for your housing fees, the housing fee reduction/exemption application **will serve as your income report**. In such cases, you do not have to submit an 収入報告書 (income report), but be sure to go through the necessary procedure during the renewal period.

### Index

- |   |   |   |   |
|---|---|---|---|
| ● Reminder Postcards about Submitting 収入報告書 (Income Report) .....                           | 1 | ● Protect Your Child from Accidents! .....                                      | 5 |
| ● Watch Out for Fires! .....  | 2 | ● Minpaku (Subleasing) and Other Unauthorized Use Is Strictly Prohibited! ..... | 5 |
| ● If You Installed a Bathtub and/or Bath Heater at Your Own Expense .....                   | 3 | ● Stop Unauthorized Parking .....   | 6 |
| ● To People Using Chimney-Type Bath Heaters .....   | 3 | ● Be Wary of Unscrupulous Door-to-Door Salesmen and Other Fraud! .....          | 6 |
| ● Prevent Heat Shock .....  | 4 | ● Submit Applications and Notifications via the Internet or Postal Mail .....   | 6 |
| ● Replacement of Household Fire Alarms .....  | 4 | ● The Victim Is Not a Stranger .....  | 7 |
| ● Please Report Any Problems with Balcony Handrails and Inspection Ports Under Floors ..... | 4 | ● North Korean Human Rights Abuse Awareness Week .....                          | 7 |
| ● Do You Have Any Late Housing Fee Payments? .....  | 5 | ● Operations During the New Year's Holiday .....                                | 8 |

「すまいのひろば」外国語版をJKK東京ホームページに掲載しています。  
Foreign-language versions of Daily Life Plaza are available on the JKK Tokyo official website.  
“居住广场” 外语版刊载于JKK东京主页上。  
‘주거광장’ 외국어판을 JKK 도쿄 홈페이지에 게재하고 있습니다.



The deadline (date of automatic withdrawal) to pay for December housing fees, etc., is Monday, January 5.  
We ask that those using automatic withdrawal check the amount in their payment account before the date of withdrawal.

# Watch Out for Fires!

## The Air Is Dry in Winter, Making Fires More Likely

### Keep your eyes on sources of fire in the kitchen when cooking

Fires occur due to people not being careful while cooking. **When cooking, stay near the stove, and be sure to turn it off if you're going out of the kitchen.**

### Dispose of cigarette butts correctly

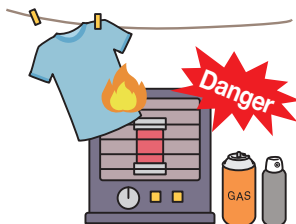
Some fires break out **because cigarette butts are disposed of improperly, such as being thrown away while still lit (when smoking in bed, for example),** so please be careful.

### Clean electrical outlets and plugs regularly

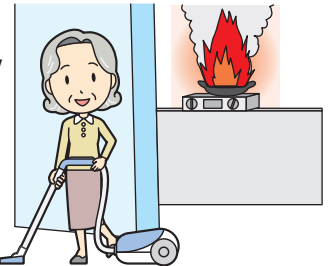
Clumps of dust in outlets and plugs will conduct electricity and cause fires. **Unplug devices that are not in use, and clean outlets and plugs regularly.**

### Use heaters correctly

If you use a heater incorrectly, it can start a fire. In particular, watch out for fires when using kerosene heaters. **(For residents in high-rise apartment buildings that are more than 15 stories high, the use of gas heaters and kerosene heaters is prohibited, regardless of which floor you live on!).**



- If the heater is on when you add kerosene, it may cause spilled kerosene to ignite, so be sure to turn it off when refueling.
- Avoid using heaters near laundry or objects which can catch fire easily.
- Keep spray cans and the like away from heaters.
- Switch off heaters when going to sleep or leaving your home.



If you start a fire, it will not only affect your homes, but also cause problems for your neighbors. Depending on what caused the fire, you may be asked to vacate your residence or pay repair costs.

In addition, if your household belongings are damaged by a fire that spreads, or by firefighting efforts, then you may be unable to receive compensation for damage from the person who accidentally caused the fire, due to the Act on Liability for Fire Caused by Negligence.

To prepare for the worst-case scenario, you can protect yourself by enrolling in fire insurance for rental housing (household possession insurance) to provide compensation for damage to your household possessions or those of a third party.

Please contact an insurance company for more information about household possession insurance, such as application procedures and required documents. Note: For municipally-owned housing, etc., the rental approval certificate will serve as a substitute for the lease agreement.

### < Warning! Handle Lithium-Ion Batteries Properly! >

The number of fires caused by lithium-ion batteries from power banks and the like have been increasing rapidly in recent years. Be sure to read the product's instruction manual carefully, and **stop use immediately if you notice something abnormal.**

These batteries also cause fires when waste is processed, so always follow the rules set by your municipality when disposing of them.



## Nutritional Lessons with Professor Panda!

### Learn about the Five Types of Nutrients

Fats are found in cooking oils, butter, margarine and mayonnaise, as well as in the fat of meat and fish. Consuming too much fat is not good for your health, but it is a necessary part of your diet since it provides energy to move and keep your body warm. Fat is also used to form cell membranes—the protective layer around cells—making it an essential nutrient for daily life.



**Q: Can you name five plant-based oils made from plant seeds or fruits?**  
**→ Answer on page 8.**

# If You Installed a Bathtub and/or Bath Heater at Your Own Expense

If a bathtub or bath heater that you installed at your own expense malfunctions, the Tokyo Metropolitan Government will pay to replace it. The deadline for applying this year for a replacement is **approaching fast**. If you wish to have your unit replaced, please confirm the following before applying:

## Application requirements

- (1) A bathtub or bath heater that you installed at your own expense is malfunctioning.
  - (2) You must agree that your housing fee will be revised if you use this service\*<sup>1</sup>.
  - (3) You are responsible for the removal and disposal of the old unit, including any associated fees\*<sup>2</sup>.
  - (4) You must not be in arrears with any housing fees.
  - (5) You must not be an over-earner or high-income earner.
- \*1: Estimated housing fee revision: Expect an increase of approximately 500 to 3,000 yen per month
- The amount of the increase depends on your household's income category.
  - You will be notified of the official amount after the bathtub/bath heater replacement work is finished.
- \*2: You can also ask the company conducting the replacement work to remove and dispose of your old unit (you are responsible for any related fees).

## Application procedures

### (1) Request an application form

Call the JKK Tokyo Customer Support Center or request a form online.

### (2) Fill out the application form

### (3) Submit the application form

You can mail the application to the JKK Tokyo Consultation Center or bring it directly to the nearest center.

## Application submission period

**Friday, December 26, 2025 (applications must arrive by this date)**

Notes: 1. You can request an application form online until Wednesday, December 17, 2025.

2. The application process may close before the deadline if the number of applications exceeds expectations.

After your application is reviewed and is determined to meet the requirements, a contractor will contact you to conduct a site survey and conduct the replacement work.

Information regarding next year's scheduled installations will be posted on Daily Life Plaza at a later date.

## How to get the application form

- ☐ By phone JKK Tokyo Customer Support Center, phone number ❶ on page 8
- ☐ Online JKK Tokyo website > Residents of Municipally-Owned Housing, etc.  
> Main Procedures for Metropolitan Housing, etc.  
> List of Online Applications Request/Reissue of Notification Forms, etc. "6.  
Requesting an application form for bathtub/bath heater replacement"



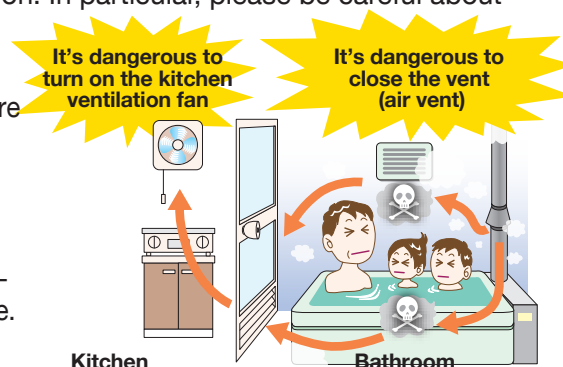
## Contact information for construction details

JKK Tokyo Customer Support Center, phone number ❷ on page 8

# To People Using Chimney-Type Bath Heaters

Because fireproof housing (concrete structures) is considerably more airtight than wooden housing and has little natural ventilation, you need to have sufficient ventilation. In particular, please be careful about the following points if you use a chimney-type bath heater:

- (1) **When reheating the bathwater while taking a bath, or when taking a shower, NEVER use the kitchen ventilation fan.** There is a risk that the exhaust burnt off by the bath heater will flow back into the room and cause carbon monoxide poisoning.
- (2) Do not block the vent that takes in outside air.
- (3) If you smell an unpleasant odor when taking a bath or a shower, exhaust may have leaked into the room. Let fresh air in by opening the bathroom window, and inspect the vent at the same time.

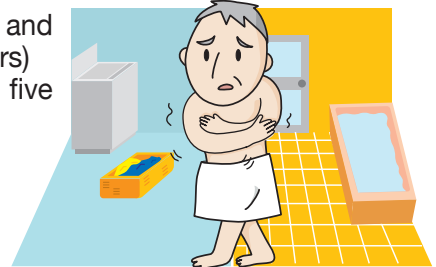


# Prevent Heat Shock

There have been accidents in which people have suddenly died while bathing due to shock from rapid fluctuations in their blood pressure caused by a sudden change in temperature.

This often occurs in the winter when the temperatures are low. The elderly and people with high blood pressure in particular need to exercise caution. The following countermeasures are effective for preventing this from occurring:

- (1) Warm up places that chill easily, such as changing rooms, bathrooms and toilets (take care regarding fire risk and ventilation when using heaters)
- (2) When heating up water, use the shower to add water for the last five minutes
- (3) Take baths before dinner or before the sun goes down
- (4) Set the water temperature to 41°C or below
- (5) Avoid taking baths right after eating or when drinking alcohol



# Replacement of Household Fire Alarms

We are currently in the process of replacing household fire alarms in municipally-owned apartments.

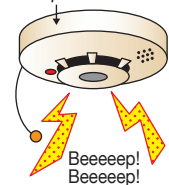
We are obligated to install and maintain these fire alarms under the Tokyo Fire Prevention Ordinance, and as such, need to be regularly replaced almost every 10 years. If the fire alarm is not replaced for reasons such as nobody being home, the detection of fire could get delayed. We ask you for your cooperation if we notify you that fire alarm replacement work will be carried out.

If you cannot see any household fire alarms installed in your apartment, please contact JKK Tokyo Customer Support Center (phone number ❷ on page 8)

## ◆ Watch out for door-to-door salesmen, scammers or other dishonest tradesmen that visit your home to sell you this kind of equipment. ◆

The replacement work will be handled by a company commissioned by JKK Tokyo. There will be no fee for this work. Residents do not need to purchase their own fire alarms.

The year of installation is printed on this part of the alarm.



## If Your Fire Alarm Goes Off...

### ◆ And There Is a Fire ◆

Check to see what caused the fire, and evacuate your apartment. Call 119, and if possible, work on extinguishing the fire in its initial stages with available means. After calling the fire department, please also report the fire to the JKK Tokyo Customer Support Center (phone number ❷ on page 8).

### ◆ And There Is No Fire ◆

Press the stop button on the fire alarm, or pull the string attached to the alarm. This will stop the fire alarm, and return it to its usual state. Afterwards, make sure to ventilate the room.

# Please Report Any Problems with Balcony Handrails and Inspection Ports Under Floors

Tokyo works to offer residents safe and secure places to live by conducting various legally mandated inspections, etc. However, we need everyone's cooperation to prevent accidents from happening within residences.

Small problems, such as wobbling handrails on balconies or shared hallways, wobbling guard rails on windows, or wobbling inspection ports under indoor floors, can lead to major accidents, like people and things falling off balconies.

In order to prevent these accidents from happening, if you notice problems, please contact the JKK Tokyo Customer Support Center (phone number ❷ on page 8).

## Do You Have Any Late Housing Fee Payments?

(1) If you continue making late payments, you will receive a notice or warning letter.



(2) Your tenancy rights will be taken away, and you may even be taken to court.



(3) If the court rules against you, you will be forced to surrender your residence.



(4) You will be required to pay off all late payments even after you vacate the residence.



### To Continue Living in Municipally-Owned Housing Without Worries

1 Make sure to pay your housing fee by the deadline.

2 If you do end up falling behind on your payment, make the payment as soon as possible.

Notes:

1. Please make use of the very convenient automatic withdrawal system to pay your housing fees.
2. Contact the JKK Tokyo Customer Support Center (phone number ❶ on page 8) if you wish to pay via automatic withdrawal or for consultations about late payments.

## Protect Your Child from Accidents!

Children play more often in the parks within the complex during winter vacation. Make sure they use the playground equipment properly and safely to prevent injuries. Additionally, make sure that children do not play in areas where you cannot easily monitor them, such as parking lots and elevators. Just a few words or a bit of extra attention could be the difference in keeping your child safe.

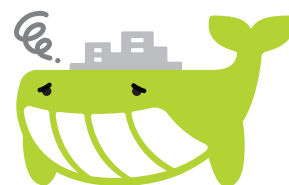
## Minpaku (Subleasing) and Other Unauthorized Use Is Strictly Prohibited!

Municipally-owned housing and Tokyo Metropolitan Government subsidized housing cannot be rented out as accommodations.

The permission for use presented when residents move in also prohibits subleasing the municipally-owned housing, etc. (e.g., *minpaku*) as well as using the housing for purposes other than residential use\*. If you are found to be violating these conditions, your permission for use may be revoked and you may be asked to surrender your residence.

Residents are requested to use their residences properly.

\* With permission from the Tokyo Metropolitan Government, a section of the residence may be used for massage, acupuncture, moxibustion or other work related to the welfare of building residents.



The prohibition against *minpaku* and other rules/manners you must follow are listed in the Living in Public Housing publication you received when you moved in. The publication is also available on the JKK Tokyo website.

JKK Tokyo website > Residents of Municipally-Owned Housing, etc. > "Daily Life Plaza" Living in Public Housing

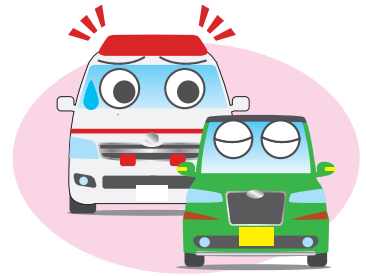




## Stop Unauthorized Parking

In municipally-owned housing, etc., with the exception of paid parking areas and disabled parking areas, you are not allowed to park on paths and vacant lots on the grounds.

The use of paths or vacant space as storage areas is a violation of the Act on Assurance of Car Parking Spaces and Other Matters. In addition to obstructing emergency vehicles, it can also block drivers' views and lead to traffic accidents. Park cars in parking lots that are recognized as vehicle storage areas.



We ask for everyone's cooperation in order to eliminate unauthorized parking at housing complexes.

## Be Wary of Unscrupulous Door-to-Door Salesmen and Other Fraud!

Residents have complained about companies with no relation to the Tokyo Metropolitan Government or JKK Tokyo that visit homes, conduct unnecessary inspections, and attempt to sell unnecessary products and charge fees. These companies claim to be subcontractors of the JKK Tokyo or say that you need to purchase products designated by the Tokyo Metropolitan Government. These things are not true.

Neither the Tokyo Metropolitan Government nor JKK Tokyo will contact or visit you in these ways. If you are suspicious or uneasy about a visitor lingering, please contact the police.

- ☐ Prior notifications are always made about inspections and construction work JKK Tokyo requests.
- ☐ JKK Tokyo employees and contractors the corporation hires will carry personal identification. Always ask to see ID when a corporation employee or contractor visits your home.
- ☐ End suspicious phone calls immediately, ignore suspicious emails, and do not open the door for visitors who do not have an appointment.

## Submit Applications and Notifications via the Internet or Postal Mail

Procedures such as 世帯員変更届 (household member change notice), 連絡先変更届 (application for change of contact), and 有料駐車場登録事項変更届 (notification of change in paid parking lot registration) can be completed online without visiting the JKK Tokyo Consultation Center. The list of procedures that you can complete online is posted on the JKK Tokyo website ("List of Online Applications").

In addition, certain procedures such as housing fee reduction/exemption applications can be completed via postal mail.



To Complete Online Applications



**JKK Tokyo Website "List of Online Applications"**

Notes:

1. Starting in April 2025, the name of the online application website has changed to LoGo Form.
2. If you are applying for the first time, you must register a new account on LoGo Form.

# The Victim Is Not a Stranger

## December 10 is Human Rights Day, and December 4 through 10 is Human Rights Week.

Human Rights Week is from December 4 to 10. It is said that “peace does not exist in places where there are no human rights.” Awareness of respect for human rights as a cornerstone of peace is universal.

Human rights refer to the people’s right to life, liberty, and the pursuit of happiness, and the right conferred upon all human beings from birth, to live with inherent dignity. Even now, however, there remain issues such as discrimination, bullying, abuse, and stalking, where people infringe upon the human rights of others.

It is important for us as a society to cultivate compassion for others and respect the human rights of others, so that we can all live in peace and happiness.

### An Example in Municipally-Owned Housing

Vandalism at municipally-owned housing properties

Graffiti containing defamation against others and discriminatory messages directed at the *burakumin* (former outcast communities) was recently discovered in the common areas of a municipally-owned housing complex.

This kind of graffiti threatens the peace of the community, and can create greater harm and discrimination if left unaddressed. Such behavior is absolutely unacceptable and requires immediate action. If you find any such graffiti, please report it immediately.

Note: Graffiti may constitute crimes such as criminal damage to property as defined by the Penal Code of Japan.

Municipally-Owned Housing Management Division, Bureau of Urban Development,  
Tokyo Metropolitan Government, Tel: 03-5320-4981  
JKK Tokyo Customer Support Center, Tel: 0570-03-0072

## December 10 until December 16 is North Korean Human Rights Abuse Awareness Week

### There are many kidnapping victims and specific missing persons who have connections to this abuse even in Tokyo.

In addition to kidnapping victims who are officially recognized by the government, there are many specific missing persons and the like, who may be kidnapping victims. This number includes people who lived in and went missing in Tokyo, and even now, at least 50 people cannot be accounted for.

Through each one of our voices, let’s push for a resolution to the kidnapping issue, so that all kidnapping victims will return to Japan as soon as possible.

- Online Photography Exhibition: Kidnapping Victims Rescue Movement  
December 1 (Mon.) to 26 (Fri.)
- Tokyo Metropolitan Government Building Blue Ribbon Light Up  
and Raising Blue-Ribbon Flags  
December 10 (Wed.) to 26 (Fri.)

Tokyo Metropolitan Government No. 1 Building will be lit-up in blue in honor of the blue-ribbon symbol and blue-ribbon flags will be raised along the major road in front of the building.



**Inquiries about Human Rights Week and North Korean Human Rights Abuse Awareness Week**  
Tokyo Metropolitan Government Bureau of General Affairs, Human Rights Division, Human Rights Policy and Promotion Section

Human Rights Division website

じんけんのとびら

Search



Tokyo Metropolitan Government  
Life and Housing  
X (formerly Twitter) feed

# Operations During the New Year's Holiday



**We are closed from  
December 27 (Sat.) to January 4 (Sun.)**



Our operations this year will finish at 6:00 p.m. on December 26 (Fri.). Operations will resume at 9:00 a.m. on January 5 (Mon.) of the new year. Please handle any procedures and repair requests as early as you can.



## For emergencies during the holidays

We will be available **24/7** even during the year-end/New Year's holidays to handle the emergencies listed below. (phone number ② below)

- Urgent repairs such as water leakage and suspension of water supply
- Accidents and fires
- Emergency contact regarding the safety of residents



## Busy hour forecast



We have published a page on the JKK Tokyo website listing times when it may be difficult to contact us by phone. Please check it before calling us.

Please be aware that reaching the JKK Tokyo Customer Support Center may be difficult at the start of the New Year due to the number of calls. If you are not in a hurry, please contact us at a later time.

Note: Please note that the January 2026 edition of Daily Life Plaza will be distributed later than in other months, on Monday, January 5.

## JKK Tokyo Customer Support Center

The phone lines are often very busy on Mondays and the day after a holiday.  
If you are not in a rush, please call on a different day.

**Hours** 9 a.m. to 6 p.m. (excluding Saturdays, Sundays, national holidays and during the year-end/New Year's holidays)

- ① For questions about procedures, housing fee payments, and/or day-to-day living**

Click here for the list of online applications for municipally-owned housing, etc.



0570-03-0071

03-6279-2652



- ② For application or consultation regarding repairs**  
For emergency repairs (leaks, etc.), accidents and/or fires, suspension of water supply, emergencies that threaten resident safety, etc.  
Open 24/7, 365 days a year.



0570-03-0072

03-6279-2653



- **Navi-Dial is not covered by the free calls or fixed-rate calling plans that mobile phone carriers offer.**

In addition, call charges vary depending on your connection and device.

For the actual process, please listen to the rate guidance at the beginning of the phone call or visit the Navi-Dial website.

Note: There are no charges for the rate guidance that plays at the beginning of the phone call.

- **Please have your “名義人番号” (lessee number) ready to ensure that we can handle your request faster.**

Please click here for the FAQ regarding procedures, etc.



Housing Policy Headquarters, Tokyo Metropolitan Government website

東京都住宅政策本部

Search



JKK Tokyo website “For residents of municipally-owned housing, etc.”

都営住宅 お住まいの皆さま

Search



Foreign-language versions of Daily Life Plaza are available on the JKK Tokyo website.  
Foreign-language versions



Daily Life Plaza is made with recycled paper.  
SAVE THE GREEN EARTH!



Sesame oil, olive oil, rice bran oil, corn oil, soybean oil, rapeseed oil, palm oil, sunflower oil, etc.

8