

Daily Life Plaza



Download Utojira smartphone wallpapers here!

2023 (Reiwa 5) May

JKK東京



Issued By: Public Housing Management Division, Tokyo Metropolitan Housing Supply Corporation | Cosmos Aoyama, 5-53-67 Jingumae, Shibuya-ku, Tokyo 150-8322

Accepting Applications for the Parent-Child Relocation Program

We are currently accepting applications for the Parent-Child Relocation Program, so that households with elderly residents can better receive support from their children and their households.

You are eligible for this program if you have lived in your current municipally-owned apartment for a year or more (your rental agreement was approved for your current municipally-owned apartment on or before June 1, 2022), and you fulfill either (1) or (2), AND (3) of the following conditions.

Application Conditions

(1) Parent Households

Parent households (can be a single individual) in municipally-owned housing, where all residents are 65 years of age or older (born on or before June 10, 1958), that wish to move to a location closer to the household of a child of theirs (does not have to be in municipally-owned housing).

(2) Child Households

Child households (can be a single individual) in municipally-owned housing that wish to move to a location closer to the household of a parent of theirs (does not have to be in municipally-owned housing), where all residents are 65 years of age or older (born on or before June 10, 1958).

(3) A relocation must reduce minimum travel time between the parent household and child household by 30 minutes or more (“minimum travel time” refers to standard travel time with public transportation).

Precautions Before Applying

(1) Households in Subsidized Housing (都民住宅), Time-Limited Housing (定期使用住宅), Welfare Housing (福祉住宅 [民生住宅]) and Repatriation Housing (引揚者住宅) may not apply for this program.

(2) Households that have late housing fee payments, or over-earners (residents whose incomes exceed the limit for municipally-owned housing) may not apply for this program.

(3) Applications must be from either the parent household or child household. You will be disqualified from the lottery if both households apply.

Index

● Accepting Applications for the Parent-Child Relocation Program	1 2 3
● We Have Started Accepting Some Online Applications and Requests!	3
● Renovation of Facilities for Elderly and/or Physically Disabled Person	4
● The Victim Is Not a Stranger	5
● Replacement of Household Fire Alarms	6

The deadline (date for direct debits) to pay for May’s housing fees, etc., is Wednesday, May 31.

If you are using direct debit, please check the amount in your payee account before the date for the direct debit.

I will work hard for a year



Number of Households

25 households

(14 parent households/11 child households; details on page 3)

Required Documents

For Application

- (1) Application form
- (2) **Two postcards** (63 yen each) (with the sender's address and name written on the front; these are for notifying you of the lottery number and results)

Note: Please be aware that any missing information or other problems in your application form may disqualify you from the lottery.

After Being Chosen in the Lottery

- (1) 住民票 (Certificate of Residence) for the parent household and child household (that is printed with “世帯全員 [All Household Members]” and the members' relationships with one another)
- (2) A document that proves the parent-child relationship (such as the 戸籍謄本 [Certificate of Residence with Family Register] of child household)

Application Method

Submit the required documents to the following address by postal mail.

Send to: Cosmos Aoyama, 5-53-67 Jingumae, Shibuya-ku, 150-8322

Relocation Office, Municipally-Owned Housing Applications Center, JKK Tokyo,

We will only accept applications that are sent by postal mail to the Municipally-Owned Housing Applications Center, JKK Tokyo by **June 14 (Wed.)**.

Application Form Distribution Period/Locations

Distribution Period: June 1 (Thu.) – 9 (Fri.), 2023, 9:00 a.m. – 6:00 p.m. (Excluding the weekend)

Application forms will be distributed at the Municipally-Owned Housing Applications Center Relocation Office and any of our Consultation Centers during the distribution period.

Lottery Date

Scheduled for mid-July 2023 (tentative)

You will be notified of the actual date/time, etc., of the lottery by a postcard informing you of your lottery number.

Housing Arrangements

- (1) There will be no relocation to newly built housing, Barrier-Free Housing (車いす住宅), and Silver Pia Housing (シルバーピア住宅).
- (2) Because arrangements are made as existing residents move out of apartments in your application area, **you will not be able to specify floors or other factors.**
- (3) Housing arrangements will begin around December 2023. Please be aware, however, that depending on the circumstances in your application area, it may take some time before your housing arrangements are made.

Other

When moving into your new apartment, you will need to complete certain procedures, such as relinquishing your current apartment, and submitting the necessary documents.



**Hi, I'm a teacher and
my name is Panda
Pleased to meet you!**

Panda, a teacher, will appear in the extra space to provide simple quizzes and trivia for children. Stay tuned!

List of Eligible Areas for the Parent-Child Relocation Program (June 2023)

Eligible Areas for Parent Household Relocation

Area #	City/Ward Name	Housing name	Address	# of Lottery Households	Target # of Residents	Floor plan	Floor size (m ²)	Elevator?
1	Sumida-ku	Sumida 4-chome Apartment	4-22 Sumida, Sumida-ku	1	1-2 people	2DK	33	Yes
2	Koto-ku	Shiohama 1-chome Apartment	1-5 Shiohama, Koto-ku	1	1-2 people	2DK	33	Yes
3	Koto-ku	Ojima 8-chome Apartment No. 2	8-11 Ojima, Koto-ku	1	1-2 people	2DK	33	Yes
4	Ota-ku	Omori Nishi 3-chome Apartment	3-1 Omori Nishi, Ota-ku	2	1-2 people	2DK	32	Yes
5	Setagaya-ku	Shimouma 2-chome Apartment	2-33 Shimouma, Setagaya-ku	2	2 people	2DK	40	Yes
6	Suginami-ku	Takaido Nishi 1-chome Apartment	1-31 Takaido Nishi, Suginami-ku	1	1-2 people	1DK	32	Yes
7	Adachi-ku	Shikahama 5-chome Apartment	5-24 Shikahama, Adachi-ku	1	1-2 people	2DK	33	Yes
8	Adachi-ku	Kodo 2-chome Apartment No. 3	2-21 Kodo, Adachi-ku	1	1-2 people	1DK	34	Yes
9	Hachioji-shi	Hachioji Ishikawamachi Apartment No.2	1920 Ishikawamachi, Hachioji-shi	1	1-2 people	1DK	42	Yes
10	Fuchu-shi	Fuchu Minamicho 4-chome Apartment	4-40 Minamicho, Fuchu-shi	1	1-2 people	1DK	32	Yes
11	Machida-shi	Kogasaka Apartment No. 2	7-28 Kogasaka, Machida-shi	1	1-2 people	1DK	34	Yes
12	Inagi-shi	Omaru Apartment No. 2	526 Omaru, Inagi-shi	1	1-2 people	1DK	34	Yes

Eligible Areas for Child Household Relocation

Area #	City/Ward Name	Housing name	Address	# of Lottery Households	Target # of Residents	Floor plan	Floor size (m ²)	Elevator?
13	Shinjuku-ku	Toyama Heights Apartment	2 Toyama, Shinjuku-ku	1	2+ people	3K	38	No
14	Sumida-ku	Yokokawa 5-chome Apartment No. 2	5-9 Yokokawa, Sumida-ku	1	2+ people	2DK	54	Yes
15	Shinagawa-ku	Higashi Shinagawa Apartment No. 5	2-6 Higashi Shinagawa, Shinagawa-ku	1	2+ people	3DK	37	Yes
16	Nakano-ku	Shirasagi 1-chome Apartment No. 3	1-4 Shirasagi, Nakano-ku	1	2+ people	2K	37	Yes
17	Suginami-ku	Kugayama 1-chome Apartment No. 2	1-8 Kugayama, Suginami-ku	1	2+ people	2DK	40	Yes
18	Kita-ku	Kirigaoka 1-chome Apartment	1-16 Kirigaoka, Kita-ku	1	2+ people	2DK	56	Yes
19	Nerima-ku	Nerima Sekimachi Kita 4-chome Apartment No.4	4-24 Sekimachi Kita, Nerima-ku	1	2+ people	2DK	54	Yes
20	Adachi-ku	Nishihokima 1-chome Apartment	1-21 Nishihokima, Adachi-ku	1	2+ people	2DK	39	Yes
21	Musashino-shi	Musashino Midoricho 2-chome Apartment No. 3	2-6 Midoricho, Musashino-shi	1	2+ people	2DK	52	Yes
22	Chofu-shi	Chofu Midorigaoka 2-chome Apartment	2-30 Midorigaoka, Chofu-shi	1	2+ people	2DK	40	Yes
23	Kokubunji-shi	Kokubunji Honcho 4-chome Apartment	4-17 Honcho, Kokubunji-shi	1	2+ people	2DK	57	Yes

■ Inquiries about Parent-Child Relocation Program Applications

Relocation Office, Municipally-Owned Housing Applications Center, JKK Tokyo,
Tel: 03-3498-8894 (Rep.)

We Have Started Accepting Some Online Applications and Requests!

Some applications and requests can be submitted online by smartphone, etc. using the Tokyo Metropolitan Government public service cloud application tool (*). Please try using it.

Target procedures

- Household fees, etc./Parking fees:
Requests for direct debit payment forms
- Housing fees, etc.: Getting a receipt reissued
- Paid parking form to change registered information
(change of vehicle)



Screenshot

* A digital application system managed by the Tokyo Metropolitan Government. You need to register an account to use the tool. For general inquiries about how to use the tool, contact the Tokyo Metropolitan Government Bureau of Digital Services.



Renovation of Facilities for Elderly and/or Physically Disabled Person

We renovate municipally-owned housing facilities in the residences of elderly and/or physically disabled person. You can apply at one of our Consultation Centers if you fulfill all three of the conditions below. Please be aware that depending on the volume of applications, it may take some time before the renovations take place.

Application Conditions

- (1) There is an individual in your household that fulfills one of the following three conditions.
 - a. Physically disabled person who holds a 身体障害者手帳 (Physical Disability Certificate) of Level 4 or higher (visually impaired, hearing impaired, or physically handicapped)
 - b. Physically disabled person at or above the level listed in the Public Officers Pension Act (Attached Chart, Article 1, Chart Item 3, Impairment Level 1), who has been provided with a 戦傷病者手帳 (Sick and Wounded Veteran Certificate)
 - c. Elderly person 65 years of age or older
- (2) The certified monthly income for your household does not surpass the resident income limit for general municipally-owned housing. (High-income earners and over-earners cannot apply)
- (3) Your household does not currently have any late housing fee payments.

Required Documents

- (1) 住宅設備改善申込書 (Housing Facility Renovation Application Form)
- (2) Copy of 身体障害者手帳 (Physical Disability Certificate), etc. that clearly shows the individual's name, address, level of disability, etc. (only for those with a physical disability)

Application Method

Submit the documents at any of our Consultation Centers or our Shirahige Branch.

Residences That Cannot Be Renovated

- (1) Residences that do not allow for construction due to the nature of their design
- (2) Residences that are slated for reconstruction or closure
- (3) Residences that already have the facilities to be added/replaced during the renovation
- (4) Special Local Rental Housing (地域特別賃貸住宅) or Designated Public Rental Housing (特定公共賃貸住宅)

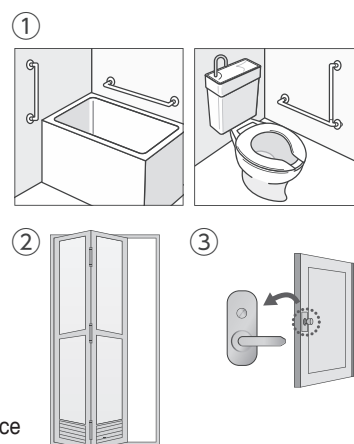
Renovations of Residential Facilities

- (1) Install handrails in the shower room, bathroom, entryway, etc.
- (2) Replace shower room door with folding door, etc.
- (3) Replace doorknobs for the front door, etc. with lever handles and/or door guards
- (4) Install power outlet in the bathroom (excludes residences with combined shower room/bathroom)
- (5) Install additional lighting fixtures near the entryway (inside the residence)
- (6) Install an intercom (with emergency contact feature) at the entryway
- (7) Install fire alarm with strobe lights in the kitchen (applies only to residents with a hearing impairment)
- (8) Install gas detector, etc. in the kitchen

Notes:

1. The renovations that will be carried out will vary depending on the household in question
2. The specific kinds of facilities to be replaced, installed, etc. will vary depending on the residence
3. Renovations in (6) and (8) will include strobe lights if there is a resident with a hearing impairment
4. Households applying for (7) and/or (8) will need to apply for (6) at the same time, or already have an intercom installed that is equivalent to the one provided in (6)

Examples of Renovations



■ Inquiries regarding housing facility renovations:

Customer Support Center, JKK Tokyo, phone number ❶ on page 6

The Victim Is Not a Stranger

May 1 (Mon.) – 7 (Sun.) is Constitution Week.

May 3 is Constitution Memorial Day. Every year, the week surrounding Constitution Memorial Day (May 1 to 7) is designated Constitution Week, with various events held throughout the country.

The Constitution of Japan guarantees its people fundamental human rights that are eternal and inviolate.

Human rights refer to the people's right to life, liberty, and the pursuit of happiness, and the right conferred upon all human beings from birth, to live with inherent dignity.

Even now, however, there remain issues such as discrimination, bullying, abuse, and stalking, where people infringe upon the human rights of others.

It is important for us as a society to cultivate compassion for others and respect the human rights of others, so that we can all live in peace and happiness.

An Example in Municipally-Owned Housing

Discriminatory graffiti in municipally-owned housing

There has been graffiti in the shared spaces of municipally-owned housing that discriminate against those from Dowa districts or people with disabilities, as well as abusive/slandorous graffiti directed at specific residents.

Discriminatory graffiti not only hurts all those involved and destabilizes their lives—left alone, it can even spread or strengthen discriminatory intent in others. This kind of behavior is entirely unacceptable.

Please contact us as soon as possible if you find any discriminatory graffiti.

Municipally-Owned Housing Management Division, Bureau of Urban Development,
Tokyo Metropolitan Government, Tel: 03-5320-4981
JKK Tokyo Customer Support Center, Tel: 0570-03-0072

Tokyo Metropolitan Human Rights Plaza

The Tokyo Metropolitan Human Rights Plaza is a facility established by the Tokyo Metropolitan Government to educate residents as to human rights. In this facility, you can consider human rights issues through sections that allow you to experience, interact, realize, understand and imagine various situations. This includes an exhibition of the Paralympic Mural, a legacy of the Tokyo 2020 Games; a zone where you can experience some of the barriers the elderly, disabled, pregnant women and others encounter; and a library and resource room. We encourage you to visit and learn more about human rights.



Address:
2-5-6 Shiba, Minato-ku, Tokyo
Shiba 256 Square Building 1F/2F
Tel: 03-6722-0123
Official Website: <https://www.tokyo-hrp.jp/>
Business Hours:
9:30 a.m. – 5:30 p.m.
Holidays:
Sunday, year-end / New Year's holiday

■ Inquiries

Tokyo Metropolitan Government Bureau of General Affairs, Human Rights Division,
Human Rights Policy and Promotion Section, Tel: 03-5388-2588 (direct line)

Human Rights Division website

じんけんのとびら

Search



Replacement of Household Fire Alarms

We are currently in the process of replacing household fire alarms in municipally-owned apartments. We are obligated to install and maintain these fire alarms under the Tokyo Fire Prevention Ordinance, and as such, need to be regularly replaced almost every 10 years. If the fire alarm is not replaced for reasons such as nobody being home, the detection of fire could get delayed. We ask you for your cooperation if we notify you that fire alarm replacement work will be carried out.

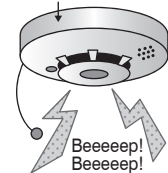
If you cannot see any fire alarm installed in your apartment, please contact JKK Tokyo Customer Support Center (phone number ② below).

◆ **Watch out for door-to-door salesmen, scammers or other dishonest tradesmen that visit your home to sell you this kind of equipment.** ◆

The replacement work will be handled by a company commissioned by JKK Tokyo.

There will be no fee for this work. Residents do not need to purchase their own fire alarms.

The year of installation is printed on this part of the alarm.



If Your Fire Alarm Goes Off...

◆ **And There Is a Fire** ◆

Check to see what caused the fire, and evacuate your apartment. Call 119, and if possible, work on extinguishing the fire in its initial stages with available means. After calling the fire department, please also report the fire to the JKK Tokyo Customer Support Center (phone number ② below).

◆ **And There Is No Fire** ◆

Press the stop button on the fire alarm, or pull the string attached to the alarm. This will stop the fire alarm, and return it to its usual state. Afterwards, make sure to ventilate the room.

Contact the JKK Tokyo Customer Support Center with any questions/comments!

Hours: 9:00 a.m. to 6:00 p.m. (excluding weekends, holidays, and year-end / New Year's holiday)

① **For questions about fee reduction procedures, housing fee payments, and/or day-to-day living**

Call the Navigation Dial at

☎ **0570-03-0071**

For those who cannot call the Navigation Dial number, and/or are using free minutes, discount services, etc., on their cell phones

☎ **03-6279-2652**



② **For application or consultation regarding repairs**

For emergency repairs (leaks, etc.), accidents and/or fires, suspension of water supply, emergencies that threaten resident safety, etc.
Open 24/7, 365 days a year.

Call the Navigation Dial at

☎ **0570-03-0072**

For those who cannot call the Navigation Dial number, and/or are using free minutes, discount services, etc., on their cell phones

☎ **03-6279-2653**



What is Navi-dial?

When using a landline, you can make calls at the local rate (excluding public phones).

When using a cellphone, toll-free minutes, or discount services of your phone company do not apply.

- Charges apply to calls to all of the above phone numbers.
- The Customer Support Center tends to **receive a high volume of calls from 9:00 to 10:00 a.m. on Mondays and the day after holidays, which means it can take longer for us to get to your call.** We ask that you avoid this timeframe if you are calling for a non-emergency matter.
- You can greatly reduce the amount of time it takes for us to handle your call by telling us your “**名義人番号 (Lessee Number)**.”

Our Official Website

Housing Policy Headquarters, Tokyo Metropolitan Government
<https://www.juutakuseisaku.metro.tokyo.lg.jp/>

Tokyo Metropolitan Housing Supply Corporation
<https://www.to-kousya.or.jp/>



Foreign-language versions of Daily Life Plaza are available on the JKK Tokyo website.



Daily Life Plaza is made with recycled paper.
SAVE THE GREEN EARTH!