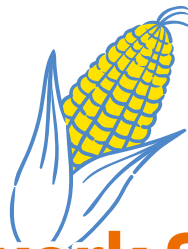




Daily Life Plaza



Prepare for Disasters
How to Use Hazard Maps



Summer Homework Support Project

Kids Page



Do You Know the SDGs? / SDGs in Your Life:
Municipally Owned Housing Initiatives

What Is Renewable Energy? How Does Solar Energy Work?

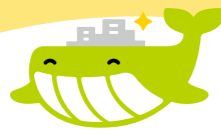
EVs Are also a Carbon Neutral Initiative!

Try This as Summer Homework!



Be Cautious in Summer

**Tree and Hedge Pruning within the Housing Complex / Pest Control /
Create an Environment That Deters Mosquitoes / Protect Your Child from Accidents /
Preventing Heatstroke**



Summer Homework

Support Project

1 Do You Know the SDGs?

Sustainable Development Goals

You may have already learned about the Sustainable Development Goals or SDGs in school. These are goals set to encourage all the countries of the world to cooperate to solve pressing global problems. They are meant to develop ways to make the world a better place and ensure a bright future for the Earth, humanity and other living things.

It is not enough for one country or one person alone to fulfill these goals. The responsibility for the future of the Earth rests on every country, business, group and person. The ones that know the significance of this responsibility are already working toward these goals.

Quiz

Parent and child challenge (1)

How many goals are there?
It's awesome if you know all the goals!

3 What Is Renewable Energy? How Does Solar Energy Work?

Fossil Fuels Accelerate Global Warming?

The main type of energy used in Japan is fossil fuel energy: electricity is generated by burning fossil fuels such as oil, coal and natural gas. Electricity is an essential part of life in Japan, and the country is one of the largest consumers of electricity.

Burning fossil fuels unfortunately produces large amounts of carbon dioxide, a "greenhouse gas," which causes the Earth's temperature to rise, accelerating global warming.

The Focus Is on Renewable Energy!

Renewable energy is gaining attention as an alternative to fossil fuel energy. Renewable energy is an environmentally friendly type of energy that uses the power of nature, such as solar power and wind power. It is sustainable and does not emit greenhouse gases.

Quiz

Parent and child challenge (2)

Approximately () % of the electricity used in Tokyo is generated from renewable energy sources.
[A 80 B 50 C 20 D 0]

4 EVs Are also a Carbon Neutral Initiative!

Cars, motorcycles and other vehicles also emit carbon dioxide!

Global warming is intensifying due to the excessive amount of greenhouse gases that various human activities produce. For example, vehicles such as cars and motorcycles burn fossil fuels and emit large amounts of carbon dioxide.

The Japanese government announced in October 2020 that by 2050 it wants to make the nation "carbon neutral," which means having a

balance between emitting carbon and absorbing carbon from the atmosphere in carbon sinks. EVs are vehicles that run on electricity. They are environmentally friendly and emit no carbon dioxide or toxic substances, and also generate little noise and vibration. EVs use a charger to store electricity in the battery, which is then used to power the motor. There are still issues that need to be

Kids

Page

2 SDGs in Your Life: Municipally Owned Solar Panels and EV Chargers

The housing complex you live in also conducts SDG-related activities, including:

Solar panels installed on the



Housing Initiatives



roof of buildings generate renewable energy

The parking lots are equipped with quick chargers for EVs

Support environmentally friendly EV initiatives

5 Try This as Summer Homework!

Research study

There are many other renewable energies besides solar energy. Try summarizing how each type of energy works using diagrams or something similar.

It is also a good idea to tour renewable energy facilities with your family.

Reference: Next-Generation Energy Park, Agency for Natural Resources and Energy

Craft and Experiment

Use solar energy panels and motors to build a solar car. Use PET bottles or polystyrene foam for the car body. Retailers also sell craft kits for this.

Play and Learn

Tokyo Home Page for Kids now available!



It's full of fun contents!



Follow the rules and the hours you spend on the Internet!

A version of Tokyo Metropolitan Government News for kids is now available! Learn about Tokyo in a fun way!



Be Cautious in Summer

! Tree and Hedge Pruning within the Housing Complex

Tall trees and hedges planted by the Tokyo Metropolitan Government are pruned regularly. However, if any of the conditions below apply, please contact the JKK Tokyo Customer Support Center and we will investigate the situation. If necessary, branches will be cut.

- Blocks sunlight
- Blocks streetlights
- Presents other obstacles to daily life
- Obstructs traffic
- May lead to crime

Residents are responsible for other types of pruning and daily maintenance of trees and hedges.



! Pest Control

If a **tree** on the property is infested with a dangerous pest such as the ones mentioned below, we will investigate and take action as necessary. Please contact the JKK Tokyo Customer Support Center.

Hornets

Hornet activity increases from summer to autumn. Their stings are extremely dangerous. If you find a nest, please contact the JKK Tokyo Customer Support Center.



Japanese browntail moths (larvae)



This species of caterpillar is found on camellia, sasanqua and other trees. Directly touching the poisonous hairs located on the black part of the caterpillar's body or coming in contact with poisonous hair blown by the wind may cause a rash. The number of consultations regarding this bug is increasing. When mowing grass or clearing branches in housing complexes, cover your skin with a long sleeveless shirt, work gloves and the like and make sure there are no caterpillars in the area. If you see these caterpillars in areas you pass by regularly, please contact the JKK Tokyo Customer Support Center.

If any pests are found **in your residence**, you are responsible for eliminating them.

If you use fumigant insecticide to eliminate household pests, the gas emitted will set off the fire alarm, so first please cover the fire alarm temporarily with a plastic bag or the like to prevent the fumigant from entering the alarm.

Additionally, please be sure to inform your neighbors in advance so that it will not be mistaken for a fire.



! Create an Environment That Deters Mosquitoes

Mosquito-borne infectious diseases can occur around you. To prevent the spread of infectious diseases, create an environment that deters mosquitoes.

Eliminate stagnant water

Get rid of any unnecessary standing water. If you have any water set aside to use for sprinkling or fire protection, replace and clean it regularly.

Eliminate weeds

Prune and weed bushes and grassy areas to improve ventilation and sunlight.

Avoid areas where mosquitoes are found

When you go outdoors, wear long-sleeved shirts and long pants to avoid exposing skin.

! Protect Your Child from Accidents

Children play more often and for longer periods in the parks in the complex during summer vacation. Make sure they use the playground equipment properly and safely. It is also dangerous to allow children to play in areas where you cannot easily monitor them, such as parking lots and elevators.

Be particularly careful about leaving objects on the balcony, near windows and other areas where there is a danger of falling. There have been reports of accidents involving children climbing onto such objects and falling.

Just a few words or a bit of extra attention could be the difference in keeping your child safe. Please always be mindful while your children are at play.

Just a few words or a bit of extra attention could be the difference in keeping your child safe.

Please always be mindful while your children are at play.

! Preventing Heatstroke

As the temperature rises, we all need to take precautions against heatstroke. Senior citizens in particular are reportedly less likely to notice that the temperature is rising. Take proactive preventive actions such as heeding the Heat Stroke Alert, which is issued when the risk of heatstroke is extremely high.

熱中症警戒アラート

熱中症警戒アラートは、熱中症の危険性が極めて高い暑熱環境になると予想される日の前日夕方または当日早朝に都道府県ごとに発表されます。発表されている日には、外出を控える、エアコンを使用する等の、熱中症の予防行動を積極的にとりましょう。

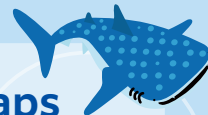
より詳しい情報は 環境省 熱中症 検索

環境省 Ministry of the Environment 気象庁 Japan Meteorological Agency

【熱中症警戒アラート】は環境省のLINE公式アカウントで確認することができます。友達追加はこちら

Source: Heatstroke Prevention Information Website (Ministry of the Environment)

Inquiries about summer dangers: JKK Tokyo Customer Support Center (phone number 2 on p. 6)



Prepare for Disasters: How to Use Hazard Maps

Typhoon season is approaching.

Rising temperatures due to global warming are reportedly affecting the occurrence of typhoons. Typhoons can strike and cause damage anywhere, including large cities like Tokyo. When a typhoon makes landfall, the storms and heavy rains it produces can cause disasters such as rivers overflowing their banks, flooding of roads and houses, and landslides.

Hazard maps that municipalities produce are useful for coping with heavy rain and typhoons as well as preparing for other disasters. You can check the disaster risks in your area and evacuation routes in case of emergency before anything happens. Regular preparedness and awareness will prevent or at least lessen the damage from a disaster.

How to use hazard maps

(1) Confirm disaster risks

Find out what disaster risks exist in your area. There are different hazard maps for each type of disaster, such as floods, landslides, etc. Check each map to confirm all the disaster risks in your area.

(2) Confirm evacuation sites

Confirm where you will evacuate to when a disaster strikes.

- Temporary evacuation sites
- Wide-area evacuation sites
- Shelters Other

(3) Confirm evacuation routes

Once you know the evacuation site, decide on a good evacuation route for getting there. Your route may change depending on the type of disaster. Also be aware that there may be traffic restrictions, such as the flooding of multi-level roads.



A Tip for Summer Homework

Make a disaster and crime prevention map for your neighborhood on imitation Japanese vellum.

Walk around your neighborhood, taking notes of anything you notice, and taking pictures to add to your map. It will come in handy one day!

Useful Disaster Prevention Information

Tokyo Disaster Prevention Information website
<https://www.bousai.metro.tokyo.lg.jp/>



東京都防災アプリ



This website provides evacuation information, useful information during disasters and for preparing for one, and disaster prevention maps for specific types of disaster for Tokyo.

Tokyo's official disaster prevention app Under the concept "play, learn and use," it includes plenty of content that will be useful during a disaster, such as educational content that shows the basics of disaster prevention while having fun.

JKK Tokyo website

Disaster Preparation at Home
<https://www.to-kousya.or.jp/nyukyosha/saigai/taifu.html>



During typhoons, heavy rains, and other disasters, the JKK Tokyo Customer Support Center lines may become extremely busy. Please take any initial actions that you can take yourself.



Contact the JKK Tokyo Customer Support Center with any questions/comments!

Hours: 9:00 a.m. to 6:00 p.m. (excluding weekends, holidays, and year-end/New Year's holiday)



1 For questions about fee reduction procedures, housing fee payments, and/or day-to-day living

Call the Navigation Dial at

☎0570-03-0071

For those who cannot call the Navigation Dial number, and/or are using free minutes, discount services, etc., on their cell phones

☎03-6279-2652



2 For application or consultation regarding repairs For emergency repairs (leaks, etc.), accidents and/or fires, cut-off of water supply, emergencies that threaten resident safety, etc. Open 24/7, 365 days a year.

Call the Navigation Dial at

☎0570-03-0072

For those who cannot call the Navigation Dial number, and/or are using free minutes, discount services, etc., on their cell phones

☎03-6279-2653



What is Navi-dial?

When using a landline, you can make calls at the local rate (excluding public phones and PHS). When using a cellphone, toll-free minutes or discount services of your phone company do not apply.

- Charges apply to calls to all of the above phone numbers.
- The Customer Support Center tends to **receive a high volume of calls from 9:00 to 10:00 a.m. on Mondays and the day after holidays, which means it can take longer for us to get to your call.** We ask that you avoid this timeframe if you are calling for a non-emergency matter.
- You can greatly reduce the amount of time it takes for us to handle your call by telling us your "名義人番号 (Lessee Number)."



Our Official Website

Housing Policy Headquarters,
Tokyo Metropolitan Government

<https://www.juutakuseisaku.metro.tokyo.lg.jp/>



JKK東京
(Tokyo Metropolitan Housing Supply Corporation)

<https://www.to-kousya.or.jp/>

